



13.06, 13th Floor, Crown House, 217 Persiaran Raja Muda
Musa,
42000 Port Klang, Selangor, Malaysia.
Fax : +603-31650818
H/P +60 123 999 675 / +60 176 946 451
info@myi-tech.com
www.myi-tech.com

Optimized Leather Cutting

Each Leather Hide is a unique natural Product and therefore special Conditions are required for its Processing.

Individual surface structure, flaws (holes, tears, scars) and color are most important, but not the only things to consider during Leather cutting .

The experienced leather Man Power cutter quickly notes all such details and converts what he sees into optimum nesting of dies and Patterns.

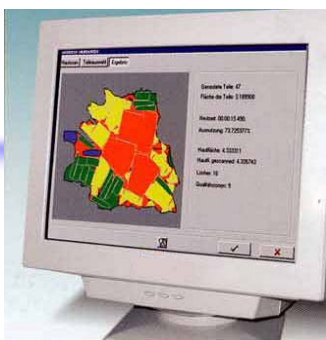
Even most modern Technology is not capable of capturing all the futures of the leather hide in real-time.

Man alone is not able to handle such complexity.

By combining leading edge technology with human skill, physically strenuous tasks can be taken out of leather processing and this allows the operator to fully concentrate all his skills and experience on work process.

There are however requirements in processing, allowing a choice of methods of your workflow.

The **MY I-Tech** is combining together with the human skills and the best Solution in Hardware and Software Technology



MY I – Tech Software Solution

Marking and Qualifying the hide

- Qualifying and marking of the hides will be done on a separate or CV Loading Table
- The hides will be marked with chalk, crayons or small tapes.
- The user has to introduce easy symbols on the hides for the different quality areas.
- The registration of the Hide couture and the Qualifying its take by a still Camera with Single Snapshot

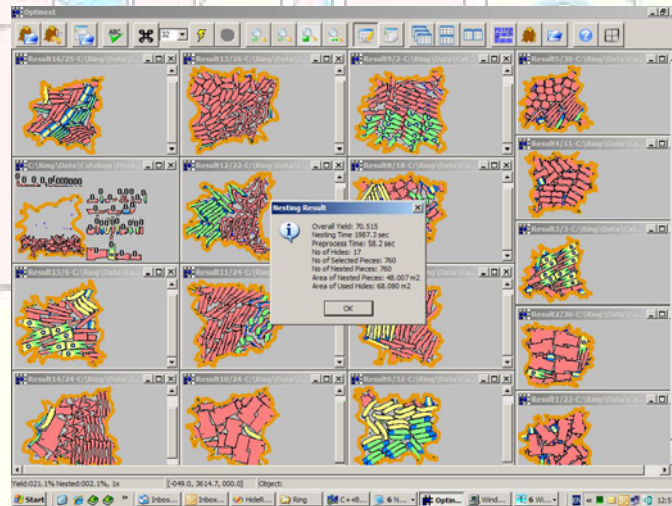
CAD Data and CAD system:

- all the templates must be digitized or create on the CAD
- the quality areas must be introduced to the templates
- different data formats must be read (DXF, IGES,)

Database:

- The database is used for introducing all hides to the system and also to hold all CAD data. The optional barcode scanner is used to introduce the hides into the system but also to introduce own data into the database. It can also be used to create an own barcode.
- SQL data base for the data and hides
- data base for the work orders
- computer windows based XP professional
- optional barcode scanner
- optional barcode printer

multiply Nesting and printable reporting System



Key Points of savings !

- **easy create Patterns and Modify**
- **easy create Models and Sets**
- **reduce Quality time to recognize the natural Leather Hide Quality Zones**
- **reduce waste material up to 8%**
- **optimize the Yield in the overall nesting**
- **improve Quality**
- **improve Output**
- **reduce Man Power**