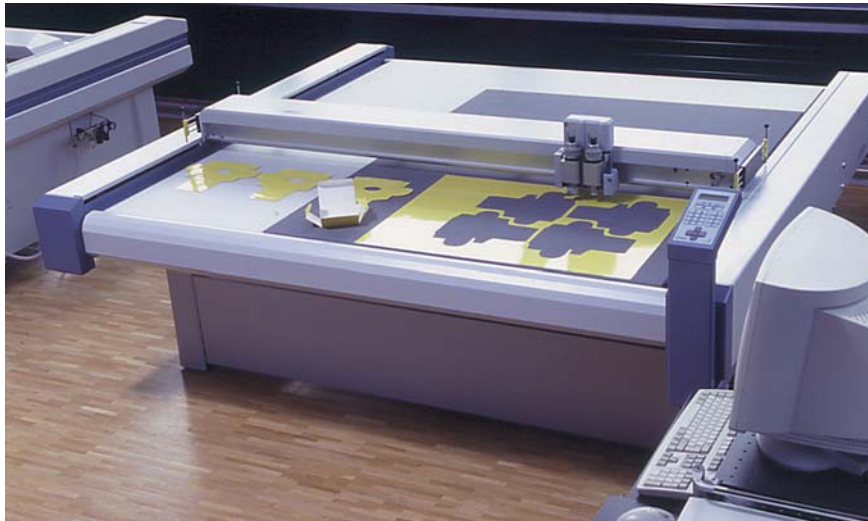


# ZÜND SAMPLEMAKER

Cutting, Creasing, Scoring and Plotting – all in one operation



Within a few years Zünd have established themselves as the leading manufacturer of precision flatbed cutters, with over 10 000 plotters/cutters "made in Switzerland". These are in operation in the sign, footwear and textile industry – and are increasing in number.

Also professionals in the packaging industry rely on the Zünd Samplemaker which stands for:

- Precision
- Quality and reliability
- High productivity and throughput
- Excellent price/performance ratio

## From cartonboard to triple wall corrugated samples

The Zünd samplemaker meets all demands for producing high class packaging samples. The universal functions are ideal from design to final presentation of sample boxes and displays. The machine can be used for short production runs in carton and corrugated board.

- Cutting, creasing and scoring of sample boxes with drag or oscillating knife
- Routing or cutting of counter matrixes
- Cutting of rubber and varnishing blankets
- Plotting on die boards and foils
- Cutting of rubber ejection

## Multi-purpose tool heads

Zünd tool heads offer unique possibilities – cutting, creasing, scoring and plotting without changing tools – and eliminate costly set-up time for this multi-operation requirement. With the combined milling/drilling and plotting configuration it is possible to draw on die board and drill bridging holes for preparation of hand cut dies.

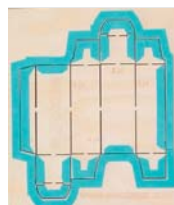


## Bevel cut with oscillating tool!



### Die board rubbering with T75-P

- bevel cut with angles from 0 to 15 degrees
- no drying, immediate processing!
- high operating life
- marking of rubber for easy identification (cutting and drawing)
- excellent fitting- and repeating accuracy
- any profile geometry possible
- multifunctional tool head Tz-T75-P for die board rubbering and producing sample boxes: creasing, cutting, drawing – all in one!



### Type Tz-T-P and Tz-2T-P

- With 2 or 3 Z-axis controlled tangential modules and pen module.
- The tangential modules can be equipped with all available tools like drag or oscillating knife, creasing wheels etc.
- The Z-axis servo control allows individual adjusting of the cutting and creasing depth.

**ZÜND**   
Swiss Printing & Cutting Systems

## Recommended sizes

Further sizes as per general plotter program or Zünd homepage

Plotter-Line	Type	Working area <sup>1</sup> (W x L in mm/inch)	Dimensions (W x L x H in mm/inch)	Weight approx.	Material width (in mm/inch)
<b>M-Line</b>	<b>M-800</b>	1300/51" x 800/31"	1840/72" x 1250/49" x 995/39"	330 kg	1550/61"
	<b>M-1200</b>	1300/51" x 1200/47"	1840/72" x 1650/65" x 995/39"	370 kg	1550/61"
	<b>M-1600</b>	1300/51" x 1620/63"	1840/72" x 2070/81" x 995/39"	440 kg	1550/61"
<b>L-Line</b>	<b>L-1200</b>	1800/70" x 1200/47"	2360/93" x 1650/65" x 995/39"	440 kg	2060/81"
	<b>LR-1600</b>	1800/70" x 1620/63"	2360/93" x 2066/81" x 995/39"	570 kg	2060/81"
	<b>LH-1600</b>	1800/70" x 1650/65"	2400/94" x 2320/91" x 1060/41"	530 kg	2060/81"
	<b>L-2500</b>	1800/70" x 2500/98"	2400/94" x 3160/124" x 1060/41"	630 kg	2460/97"
<b>XL-Line</b>	<b>L-3000</b>	1800/70" x 3000/118"	2400/94" x 3660/144" x 1060/41"	690 kg	2060/81"
	<b>XL-1200</b>	2200/86" x 1200/47"	2760/108" x 1650/65" x 995/39"	580 kg	2460/97"
	<b>XL-2500</b>	2200/86" x 2500/98"	2800/110" x 3160/124" x 1060/41"	750 kg	2460/97"
	<b>XL-3000</b>	2200/86" x 3000/118"	2800/110" x 3660/144" x 1060/41"	840 kg	2460/97"

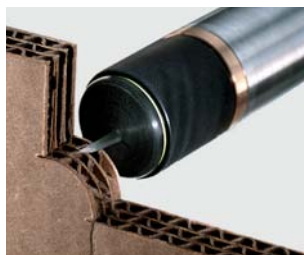
<sup>1</sup>The precise working area depends on the type of tool head fitted and may vary slightly.

## Tools for Zünd Samplemaker



### Creasing

- Interchangeable creasing tools produce optimal creases in carton and corrugated board
- Position-controlled Z-axis allows individual setting of creasing depth or X/Y creasing pressure



### Oscillating knives

High-performance knives cut corrugated board and foam materials

#### Pneumatic oscillating tool POT (heavy duty)

- High performance knife cuts double and triple wall board, solid board up to 4 mm
- Cuts foam materials up to 28 mm

#### Electric oscillating tool EOT (light duty)

- For N-, F- or E-flute



### Routing

- High-frequency milling spindles 150 or 450 W
- Speed range 5'000–60'000 rpm
- Precise routing of matrixes, register and bridging holes
- For counter dies in wood, plywood, plastic or pertinax

Technical data	Mechanical construction:		
	- rugged, welded construction (frame or side support versions). Slip-free steel band drive (patented) with hardened and ground linear guides for superb quality and high precision - all axes with highly dynamic DC-servo motor drives - acrylic table top, knife- and servicefriendly - material hold-down with stepless vacuum system - light barriers with integrated self test to control the working area		
Repeatability	+/- 0.02 mm (0.0008")	Speed	1 – 1000 mm/sec (0.04 – 39"/s)
Resolution measuring system	0.005 mm (0.0002")	Acceleration	max. speed and acceleration depends on cutter type max 10 m/sec <sup>2</sup> , (400"/s <sup>2</sup> ) and tool head.
Addressable resolution	0.01 mm (0.0004")	Interface	RS232C / V24, 600...38400 Baud Input buffer: 1 MB with replot function
Material clearance	30 mm standard (1.18") optional 50/75 mm (2/3")	Software	Command set: HP-GL extended Data format: ASCII
Compressed air supply	min. 400 l/min. at 8 bar for oscillating tool type POT	Vacuum pump	0.8 kW 230 V / 50 Hz single phase 2.2 kW 3 x 400 V / 50 Hz three phase
Mains supply	110 V, 115 V, 230 V / 50 – 60 Hz, 700 VA single phase	Tool heads and special tools	Tz-T-P, Tz-2T-P, Pen-Heads 1P, 2P and 4P, T75-P, Tz-T75-P, R45-P, Tz-R45-P, POT/EOT, Laser

Verpackung 01.9/02.3.FVA



Zünd Samplemakers are manufactured to CE and UL approval.

Illustrations, descriptions and technical data are not binding and may be changed without prior notice.

**ZÜND**  
Swiss Printing & Cutting Systems

### Zünd Systemtechnik AG

Industriestrasse 8  
CH-9450 Altstätten, Switzerland  
Phone +41 71 757 81 00  
Telefax +41 71 757 81 11  
E-Mail: info@zund.com  
http://www.zund.com